

NEAL
HAMIL
AGENCY
— A Siskel family company since 1993 —



Troy Froman

Height: 185 cm / 6'1" | Waist: 74 cm / 29" | Inseam: 84 cm / 33" | Shoe: 46.0 EU / 11.5 US |

NEAL
HAMIL
AGENCY
— A Siskel family company since 1993 —



Troy Froman

Height: 185 cm / 6'1" | Waist: 74 cm / 29" | Inseam: 84 cm / 33" | Shoe: 46.0 EU / 11.5 US |

NEAL
HAMIL
AGENCY
— A Sicil family company since 1993 —



Troy Froman

Height: 185 cm / 6'1" | Waist: 74 cm / 29" | Inseam: 84 cm / 33" | Shoe: 46.0 EU / 11.5 US |



Troy Froman

Height: 185 cm / 6'1" | Waist: 74 cm / 29" | Inseam: 84 cm / 33" | Shoe: 46.0 EU / 11.5 US |

NEAL
HAMIL
AGENCY
— A Siskel family company since 1993 —



Troy Froman

Height: 185 cm / 6'1" | Waist: 74 cm / 29" | Inseam: 84 cm / 33" | Shoe: 46.0 EU / 11.5 US |

NEAL
HAMIL
AGENCY
— A Sicil family company since 1993 —



Troy Froman

Height: 185 cm / 6'1" | Waist: 74 cm / 29" | Inseam: 84 cm / 33" | Shoe: 46.0 EU / 11.5 US |

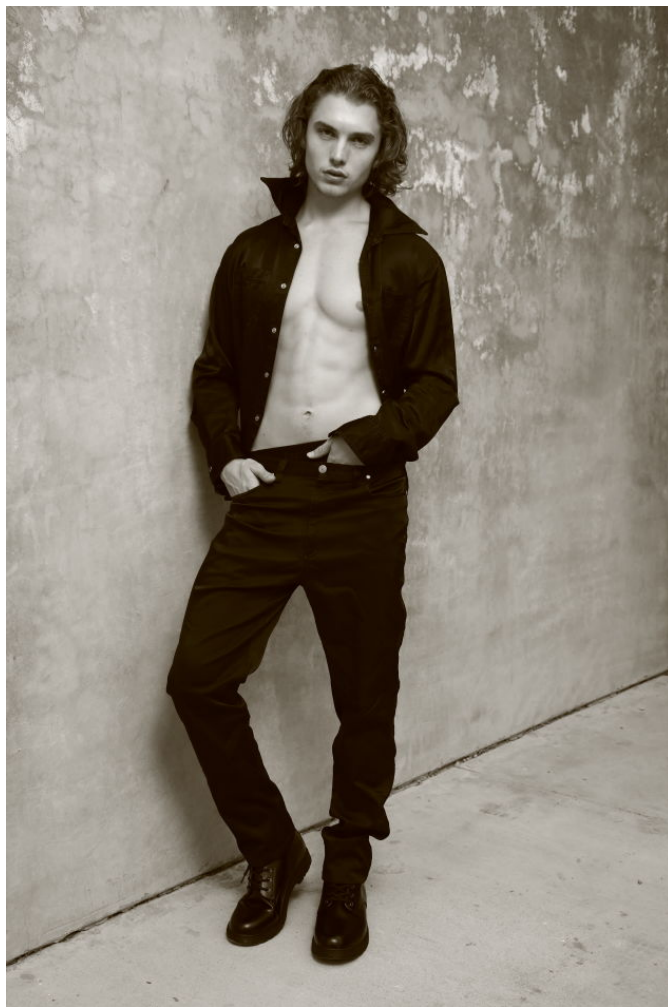
NEAL
HAMIL
AGENCY
— A Sief family company since 1993 —



Troy Froman

Height: 185 cm / 6'1" | Waist: 74 cm / 29" | Inseam: 84 cm / 33" | Shoe: 46.0 EU / 11.5 US |

NEAL
HAMIL
AGENCY
— A Siskel family company since 1993 —



Troy Froman

Height: 185 cm / 6'1" | Waist: 74 cm / 29" | Inseam: 84 cm / 33" | Shoe: 46.0 EU / 11.5 US |

NEAL
HAMIL
AGENCY
— A Sicil family company since 1993 —



Troy Froman

Height: 185 cm / 6'1" | Waist: 74 cm / 29" | Inseam: 84 cm / 33" | Shoe: 46.0 EU / 11.5 US |

NEAL
HAMIL
AGENCY
— A Sicil family company since 1993 —



Troy Froman

Height: 185 cm / 6'1" | Waist: 74 cm / 29" | Inseam: 84 cm / 33" | Shoe: 46.0 EU / 11.5 US |

Height: 185 cm / 6'1" | Waist: 74 cm

NEAL
HAMIL
AGENCY
— A Siskel family company since 1993 —

m / 33" | Shoe: 46.0 EU / 11.5 US |