

NEAL  
HAMIL  
AGENCY



# NEAL HAMIL AGENCY

Height: 184 cm / 6'0.5" | Waist: 79 cm / 31" | Inseam: 84 cm / 33" | Collar: 38.0 cm / 38" | Suit Length: L | Shoe: 46.0 EU / 11.5 US | Hair: Black | Eyes:

# NEAL HAMIL AGENCY



# NEAL HAMIL AGENCY

Height: 184 cm / 6'0.5" | Waist: 79 cm / 31" | Inseam: 84 cm / 33" | Collar: 8.0 cm / 3.1" | Suit Length: L | Shoe: 46.0 EU / 11.5 US | Hair: Black | Eyes:

# NEAL HAMIL AGENCY



# NEAL HAMIL AGENCY

Height: 184 cm / 6'0.5" | Waist: 79 cm / 31" | Inseam: 84 cm / 33" | Collar: 8.0 cm / 3.1" | Suit Length: L | Shoe: 46.0 EU / 11.5 US | Hair: Black | Eyes:

# NEAL HAMIL AGENCY



# NEAL HAMIL AGENCY

Height: 184 cm / 6'0.5" | Waist: 79 cm / 31" | Inseam: 84 cm / 33" | Collar: 38.0 cm / 38" | Suit Length: L | Shoe: 46.0 EU / 11.5 US | Hair: Black | Eyes:



# NEAL HAMIL AGENCY



# NEAL HAMIL AGENCY

Height: 184 cm / 6'0.5" | Waist: 79 cm / 31" | Inseam: 84 cm / 33" | Collar: 8.0 cm / 3.1" | Suit Length: L | Shoe: 46.0 EU / 11.5 US | Hair: Black | Eyes:

NEAL  
HAMIL  
AGENCY



# NEAL HAMIL AGENCY

Height: 184 cm / 6'0.5" | Waist: 79 cm / 31" | Inseam: 84 cm / 33" | Collar: 38.0 cm / 38" | Suit Length: L | Shoe: 46.0 EU / 11.5 US | Hair: Black | Eyes:

# NEAL HAMIL AGENCY



# NEAL HAMIL AGENCY

Height: 184 cm / 6'0.5" | Waist: 79 cm / 31" | Inseam: 84 cm / 33" | Collar: 8.0 cm / 3.1" | Suit Length: L | Shoe: 46.0 EU / 11.5 US | Hair: Black | Eyes:



# NEAL HAMIL AGENCY



# NEAL HAMIL AGENCY

Height: 184 cm / 6'0.5" | Waist: 79 cm / 31" | Inseam: 84 cm / 33" | Collar: 8.0 cm / 3.1" | Suit Length: L | Shoe: 46.0 EU / 11.5 US | Hair: Black | Eyes:



# NEAL HAMIL AGENCY



# NEAL HAMIL AGENCY

Height: 184 cm / 6'0.5" | Waist: 79 cm / 31" | Inseam: 84 cm / 33" | Collar: 38.0 cm / 38" | Suit Length: L | Shoe: 46.0 EU / 11.5 US | Hair: Black | Eyes:

# NEAL HAMIL AGENCY



# NEAL HAMIL AGENCY

Height: 184 cm / 6'0.5" | Waist: 79 cm / 31" | Inseam: 84 cm / 33" | Collar: 8.0 cm / 3.1" | Suit Length: L | Shoe: 46.0 EU / 11.5 US | Hair: Black | Eyes:

# NEAL HAMIL AGENCY



# NEAL HAMIL AGENCY

Height: 184 cm / 6'0.5" | Waist: 79 cm / 31" | Inseam: 84 cm / 33" | Collar: 8.0 cm / 3.1" | Suit Length: L | Shoe: 46.0 EU / 11.5 US | Hair: Black | Eyes:



# NEAL HAMIL AGENCY



# NEAL HAMIL AGENCY

Height: 184 cm / 6'0.5" | Waist: 79 cm / 31" | Inseam: 84 cm / 33" | Collar: 38.0 cm / 38" | Suit Length: L | Shoe: 46.0 EU / 11.5 US | Hair: Black | Eyes:



NEAL  
HAMIL  
AGENCY



# NEAL HAMIL AGENCY

Height: 184 cm / 6'0.5" | Waist: 79 cm / 31" | Inseam: 84 cm / 33" | Collar: 38.0 cm / 38" | Suit Length: L | Shoe: 46.0 EU / 11.5 US | Hair: Black | Eyes:

# NEAL HAMIL AGENCY



# NEAL HAMIL AGENCY

Height: 184 cm / 6'0.5" | Waist: 79 cm / 31" | Inseam: 84 cm / 33" | Collar: 8.0 cm / 3.1" | Suit Length: L | Shoe: 46.0 EU / 11.5 US | Hair: Black | Eyes:

# NEAL HAMIL AGENCY

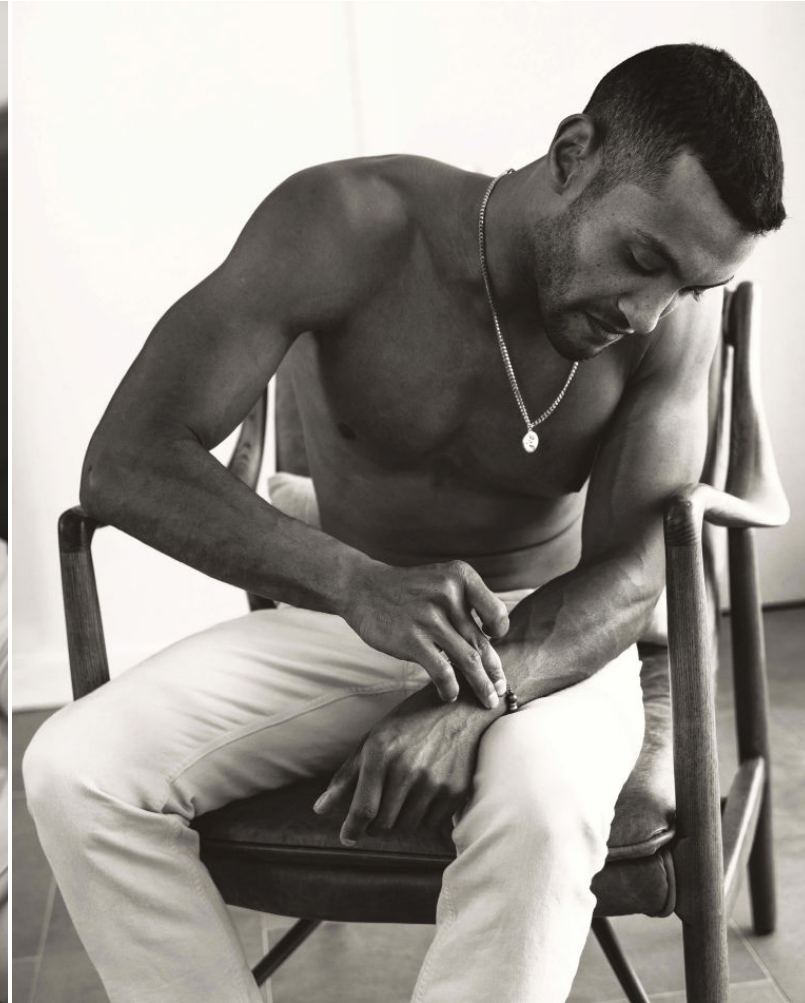


# NEAL HAMIL AGENCY

Height: 184 cm / 6'0.5" | Waist: 79 cm / 31" | Inseam: 84 cm / 33" | Collar: 8.0 cm / 3.1" | Suit Length: L | Shoe: 46.0 EU / 11.5 US | Hair: Black | Eyes:



NEAL  
HAMIL  
AGENCY



# NEAL HAMIL AGENCY

Height: 184 cm / 6'0.5" | Waist: 79 cm / 31" | Inseam: 84 cm / 33" | Collar: 8.0 cm / 3.1" | Suit Length: L | Shoe: 46.0 EU / 11.5 US | Hair: Black | Eyes:



# NEAL HAMIL AGENCY



# NEAL HAMIL AGENCY

Height: 184 cm / 6'0.5" | Waist: 79 cm / 31" | Inseam: 84 cm / 33" | Collar: 8.0 cm / 3.1" | Suit Length: L | Shoe: 46.0 EU / 11.5 US | Hair: Black | Eyes:

# NEAL HAMIL AGENCY



# NEAL HAMIL AGENCY

Height: 184 cm / 6'0.5" | Waist: 79 cm / 31" | Inseam: 84 cm / 33" | Collar: 8.0 cm / 3.1" | Suit Length: L | Shoe: 46.0 EU / 11.5 US | Hair: Black | Eyes:

# NEAL HAMIL AGENCY



# NEAL HAMIL AGENCY

Height: 184 cm / 6'0.5" | Waist: 79 cm / 31" | Inseam: 84 cm / 33" | Collar: 38.0 cm / 38" | Suit Length: L | Shoe: 46.0 EU / 11.5 US | Hair: Black | Eyes:

# NEAL HAMIL AGENCY





# NEAL HAMIL AGENCY

Height: 184 cm / 6'0.5" | Waist: 79 cm / 31" | Inseam: 84 cm / 33" | Collar: 8.0 cm / 3.1" | Suit Length: L | Shoe: 46.0 EU / 11.5 US | Hair: Black | Eyes:



# NEAL HAMIL AGENCY

## EDITOR'S NOTES

May 2017

I recently read an e-mail from a reader who asked us about our model selection process. She was curious as to whether we had a system in place, or if we were simply winging it. Well, here's a detailed explanation as I think it's important that our readers have a clear understanding on MiA's stance towards this process.

First of all, I'm in no position to judge attractiveness in a general sense, because each and every one of us have different opinions of it. However, as an editor tasked with choosing talent each and every month, I can say with a certain degree of confidence that I do in fact select models that my team and I find appealing, and I'll explain why. We cater to a specific audience, and as much as we'd like to, we can't pander to every demographic. As a business, we've set a target, and we do our best to stay within the criteria we've set for ourselves. This is called principle.

Our selection process isn't one dimensional, which leads to my second point. Regardless of how attractive or drop dead gorgeous the model in question may be, we also take into account the various other aspects of the project. The model selection process is done by us at MiA, but each and every member of the team, especially the photographers, have a huge influence on the final decision in order to pick the right person for the right job. Sometimes we select the model first and then develop a theme around him/her, while other times we establish a theme first and then recruit a suitable model. It's a two way street, and it works incredibly well for us as it reinforces what we've been encouraging all along; collaboration.

Finally, we don't judge based on race. If you're a model working in Bangkok, our doors are open for you. Send us an e-mail and we'll respond as soon as we can. We may be called 'Models in Asia' but we are in no way relegated to just selecting Asian models, and we certainly aren't whitewashing our content either.

So there you go. This isn't a competition; we don't judge and we don't discriminate. As a lover of all things cheese, I can assure you I am twice the width of the gentlemen on the right, and not the Vin Diesel kind of wide either. More like Spongebob.

Phyo Myint | Editor



# NEAL HAMIL AGENCY

Height: 184 cm / 6'0.5" | Waist: 79 cm / 31" | Inseam: 84 cm / 33" | Collar: 38.0 cm / 38" | Suit Length: L | Shoe: 46.0 EU / 11.5 US | Hair: Black | Eyes:

NEAL  
HAMIL  
AGENCY



# NEAL HAMIL AGENCY

Height: 184 cm / 6'0.5" | Waist: 79 cm / 31" | Inseam: 84 cm / 33" | Collar: 38.0 cm / 38" | Suit Length: L | Shoe: 46.0 EU / 11.5 US | Hair: Black | Eyes:

# NEAL HAMIL AGENCY



# NEAL HAMIL AGENCY

Height: 184 cm / 6'0.5" | Waist: 79 cm / 31" | Inseam: 84 cm / 33" | Collar: 38.0 cm / 38" | Suit Length: L | Shoe: 46.0 EU / 11.5 US | Hair: Black | Eyes:



# NEAL HAMIL AGENCY



# NEAL HAMIL AGENCY

Height: 184 cm / 6'0.5" | Waist: 79 cm / 31" | Inseam: 84 cm / 33" | Collar: 38.0 cm / 38" | Suit Length: L | Shoe: 46.0 EU / 11.5 US | Hair: Black | Eyes:

# NEAL HAMIL AGENCY



# NEAL HAMIL AGENCY

Height: 184 cm / 6'0.5" | Waist: 79 cm / 31" | Inseam: 84 cm / 33" | Collar: 38.0 cm / 38" | Suit Length: L | Shoe: 46.0 EU / 11.5 US | Hair: Black | Eyes:

# NEAL HAMIL AGENCY



# NEAL HAMIL AGENCY

Height: 184 cm / 6'0.5" | Waist: 79 cm / 31" | Inseam: 84 cm / 33" | Collar: 38.0 cm / 38" | Suit Length: L | Shoe: 46.0 EU / 11.5 US | Hair: Black | Eyes:



# NEAL HAMIL AGENCY





# NEAL HAMIL AGENCY

Height: 184 cm / 6'0.5" | Waist: 79 cm / 31" | Inseam: 84 cm / 33" | Collar: 8.0 cm / 3.1" | Suit Length: L | Shoe: 46.0 EU / 11.5 US | Hair: Black | Eyes:

# NEAL HAMIL AGENCY



# NEAL HAMIL AGENCY

Height: 184 cm / 6'0.5" | Waist: 79 cm / 31" | Inseam: 84 cm / 33" | Collar: 8.0 cm / 3.1" | Suit Length: L | Shoe: 46.0 EU / 11.5 US | Hair: Black | Eyes:

# NEAL HAMIL AGENCY





# NEAL HAMIL AGENCY

Height: 184 cm / 6'0.5" | Waist: 79 cm / 31" | Inseam: 84 cm / 33" | Collar: 8.0 cm / 3.1" | Suit Length: L | Shoe: 46.0 EU / 11.5 US | Hair: Black | Eyes:

# NEAL HAMIL AGENCY

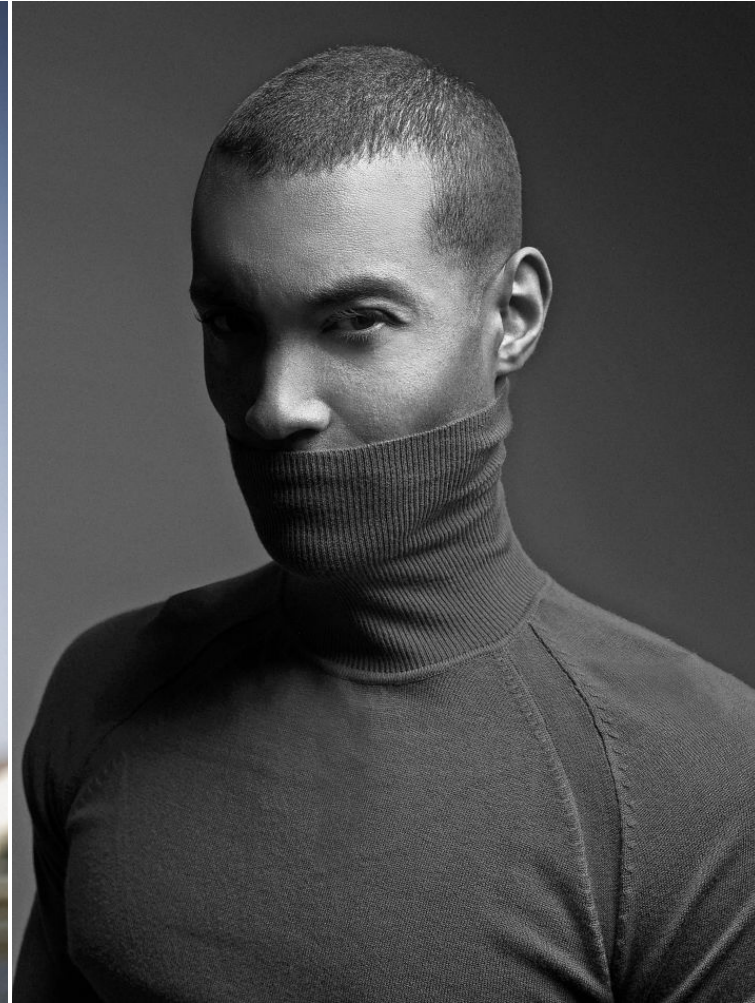


# NEAL HAMIL AGENCY

Height: 184 cm / 6'0.5" | Waist: 79 cm / 31" | Inseam: 84 cm / 33" | Collar: 8.0 cm / 3.1" | Suit Length: L | Shoe: 46.0 EU / 11.5 US | Hair: Black | Eyes:



# NEAL HAMIL AGENCY



# NEAL HAMIL AGENCY

Height: 184 cm / 6'0.5" | Waist: 79 cm / 31" | Inseam: 84 cm / 33" | Collar: 38.0 cm / 38" | Suit Length: L | Shoe: 46.0 EU / 11.5 US | Hair: Black | Eyes:

# NEAL HAMIL AGENCY



# NEAL HAMIL AGENCY

Height: 184 cm / 6'0.5" | Waist: 79 cm / 31" | Inseam: 84 cm / 33" | Collar: 38.0 cm / 38" | Suit Length: L | Shoe: 46.0 EU / 11.5 US | Hair: Black | Eyes:

Height: 184 cm / 6'0.5" | Waist: 79 cm / 31" | Inseam: 84 cm / 33" | Collar: 39 cm / 15.5" | Suit size: 48.0 cm / 38" | Suit Length: L | Shoe: 46.0 EU / 11.5 US | Hair: Black | Eyes:  
Brown