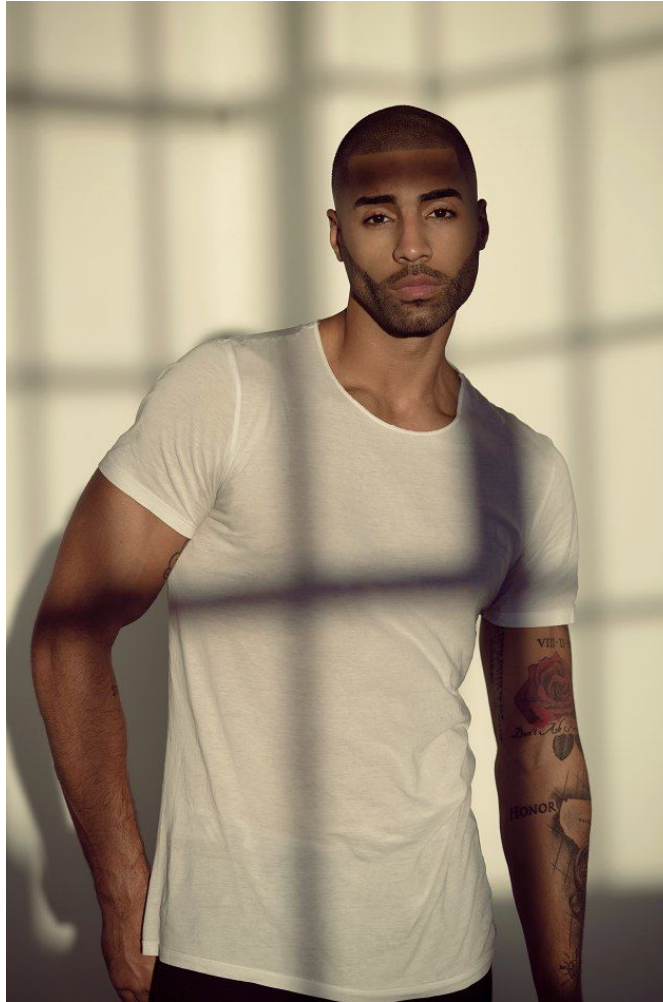


NEAL
HAMIL
AGENCY
— A Siskel family company since 1993 —



Craig Anya

Height: 193 cm / 6'4" | Waist: 81 cm / 32" | Inseam: 86 cm / 34" | Suit size: 51.5 cm / 41.5" | Suit Length: L | Shoe: 46.5 EU / 12.0 US | Hair: Black | Eyes: Brown



Craig Anya

Height: 193 cm / 6'4" | Waist: 81 cm / 32" | Inseam: 86 cm / 34" | Suit size: 51.5 cm / 41.5" | Suit Length: L | Shoe: 46.5 EU / 12.0 US | Hair: Black | Eyes: Brown

NEAL
HAMIL
AGENCY
— A Sicil family company since 1993 —



Craig Anya

Height: 193 cm / 6'4" | Waist: 81 cm / 32" | Inseam: 86 cm / 34" | Suit size: 51.5 cm / 41.5" | Suit Length: L | Shoe: 46.5 EU / 12.0 US | Hair: Black | Eyes: Brown



Craig Anya

Height: 193 cm / 6'4" | Waist: 81 cm / 32" | Inseam: 86 cm / 34" | Suit size: 51.5 cm / 41.5" | Suit Length: L | Shoe: 46.5 EU / 12.0 US | Hair: Black | Eyes: Brown



Craig Anya

Height: 193 cm / 6'4" | Waist: 81 cm / 32" | Inseam: 86 cm / 34" | Suit size: 51.5 cm / 41.5" | Suit Length: L | Shoe: 46.5 EU / 12.0 US | Hair: Black | Eyes: Brown



Craig Anya

Height: 193 cm / 6'4" | Waist: 81 cm / 32" | Inseam: 86 cm / 34" | Suit size: 51.5 cm / 41.5" | Suit Length: L | Shoe: 46.5 EU / 12.0 US | Hair: Black | Eyes: Brown

The screenshot shows the Academy Sports+Outdoors website interface. At the top, there is a navigation bar with a hamburger menu icon, the Academy logo, a search icon, and a shopping cart icon. Below the navigation bar is a vertical sidebar with a 'MENU' button and a 'SEE MORE 6' button. The main content area features a large promotional banner for Nike athletic wear. The banner is divided into two sections. The top section shows a male model in a red Nike tank top and grey shorts, holding a basketball. The price for the tank top is \$19.99, and the price for the shorts is \$24.99. The bottom section shows a young boy in a black 'BEAST' t-shirt and red shorts, also holding a basketball. The price for the t-shirt is \$14.99, and the price for the shorts is \$17.99. A 'BUY ONLINE + PICK UP IN' button is located at the bottom of the banner.



Craig Anya

Height: 193 cm / 6'4" | Waist: 81 cm / 32" | Inseam: 86 cm / 34" | Suit size: 51.5 cm / 41.5" | Suit Length: L | Shoe: 46.5 EU / 12.0 US | Hair: Black | Eyes: Brown

Height: 193 cm / 6'4" | Waist: 81 cm / 32" | Inseam: 86 cm / 34" | Suit



| Suit Length: L | Shoe: 46.5 EU / 12.0 US | Hair: Black | Eyes: Brown