

NEAL
HAMIL
AGENCY
— A Shick family company since 1993 —



Height: 178 cm / 5'10" | Waist: 97 cm / 38" | Inseam: 79 cm / 31" | Collar: 43 cr



0 cm / 48" | Suit Length: R | Shoe: 46.5 EU / 12.0 US | Hair: Grey-Black | Eyes:

NEAL
HAMIL
AGENCY
— A Skell family company since 1993 —



Height: 178 cm / 5'10" | Waist: 97 cm / 38" | Inseam: 79 cm / 31" | Collar: 43 cr



0 cm / 48" | Suit Length: R | Shoe: 46.5 EU / 12.0 US | Hair: Grey-Black | Eyes:

NEAL
HAMIL
AGENCY
— A Skell family company since 1993 —



Height: 178 cm / 5'10" | Waist: 97 cm / 38" | Inseam: 79 cm / 31" | Collar: 43 cr



0 cm / 48" | Suit Length: R | Shoe: 46.5 EU / 12.0 US | Hair: Grey-Black | Eyes:

NEAL
HAMIL
AGENCY
— A Skell family company since 1993 —



Height: 178 cm / 5'10" | Waist: 97 cm / 38" | Inseam: 79 cm / 31" | Collar: 43 cr



0 cm / 48" | Suit Length: R | Shoe: 46.5 EU / 12.0 US | Hair: Grey-Black | Eyes:





Height: 178 cm / 5'10" | Waist: 97 cm / 38" | Inseam: 79 cm / 31" | Collar: 43 cr

0 cm / 48" | Suit Length: R | Shoe: 46.5 EU / 12.0 US | Hair: Grey-Black | Eyes:

NEAL
HAMIL
AGENCY
— A Skell family company since 1993 —





Height: 178 cm / 5'10" | Waist: 97 cm / 38" | Inseam: 79 cm / 31" | Collar: 43 cr

0 cm / 48" | Suit Length: R | Shoe: 46.5 EU / 12.0 US | Hair: Grey-Black | Eyes:

NEAL
HAMIL
AGENCY
— A Skell family company since 1993 —



Height: 178 cm / 5'10" | Waist: 97 cm / 38" | Inseam: 79 cm / 31" | Collar: 43 cr



0 cm / 48" | Suit Length: R | Shoe: 46.5 EU / 12.0 US | Hair: Grey-Black | Eyes:

NEAL
HAMIL
AGENCY
— A Shel family company since 1993 —



Height: 178 cm / 5'10" | Waist: 97 cm / 38" | Inseam: 79 cm / 31" | Collar: 43 cr



0 cm / 48" | Suit Length: R | Shoe: 46.5 EU / 12.0 US | Hair: Grey-Black | Eyes:

NEAL
HAMIL
AGENCY
— A Skell family company since 1993 —





Height: 178 cm / 5'10" | Waist: 97 cm / 38" | Inseam: 79 cm / 31" | Collar: 43 cr

0 cm / 48" | Suit Length: R | Shoe: 46.5 EU / 12.0 US | Hair: Grey-Black | Eyes:

NEAL
HAMIL
AGENCY
— A Shel family company since 1993 —



Height: 178 cm / 5'10" | Waist: 97 cm / 38" | Inseam: 79 cm / 31" | Collar: 43 cr



0 cm / 48" | Suit Length: R | Shoe: 46.5 EU / 12.0 US | Hair: Grey-Black | Eyes:

NEAL
HAMIL
AGENCY
— A Shellen Company since 1993 —





Height: 178 cm / 5'10" | Waist: 97 cm / 38" | Inseam: 79 cm / 31" | Collar: 43 cr

0 cm / 48" | Suit Length: R | Shoe: 46.5 EU / 12.0 US | Hair: Grey-Black | Eyes:

NEAL
HAMIL
AGENCY
— A Skell family company since 1993 —

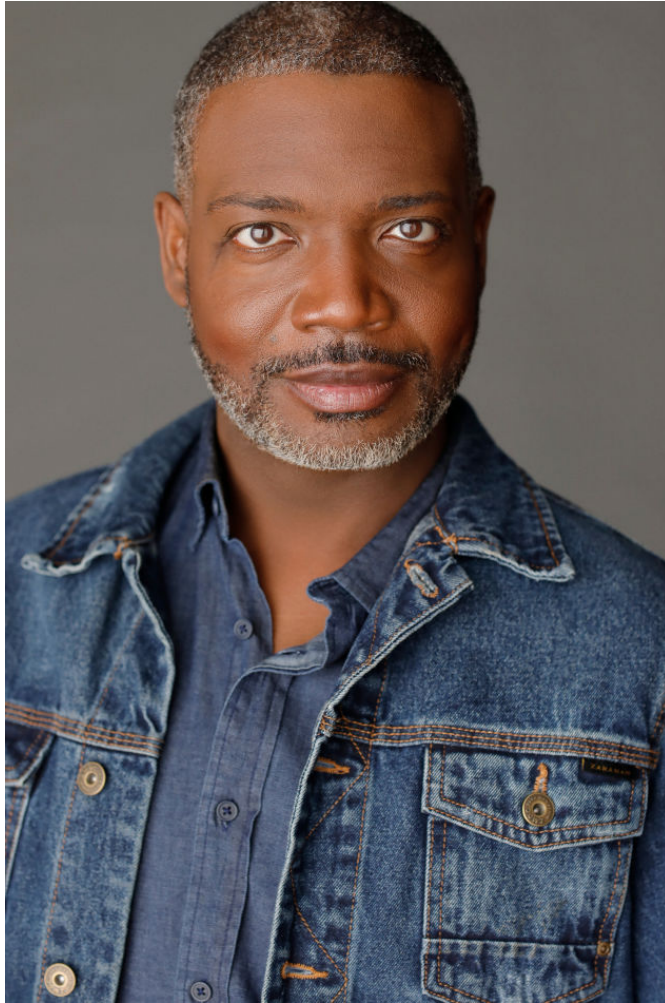




Height: 178 cm / 5'10" | Waist: 97 cm / 38" | Inseam: 79 cm / 31" | Collar: 43 cr

0 cm / 48" | Suit Length: R | Shoe: 46.5 EU / 12.0 US | Hair: Grey-Black | Eyes:

NEAL
HAMIL
AGENCY
— A Shill family company since 1993 —





Height: 178 cm / 5'10" | Waist: 97 cm / 38" | Inseam: 79 cm / 31" | Collar: 43 cr

0 cm / 48" | Suit Length: R | Shoe: 46.5 EU / 12.0 US | Hair: Grey-Black | Eyes:

NEAL
HAMIL
AGENCY
— A Skell family company since 1993 —



Height: 178 cm / 5'10" | Waist: 97 cm / 38" | Inseam: 79 cm / 31" | Collar: 43 cr



0 cm / 48" | Suit Length: R | Shoe: 46.5 EU / 12.0 US | Hair: Grey-Black | Eyes:

NEAL
HAMIL
AGENCY
— A Shelli family company since 1993 —





Height: 178 cm / 5'10" | Waist: 97 cm / 38" | Inseam: 79 cm / 31" | Collar: 43 cr

0 cm / 48" | Suit Length: R | Shoe: 46.5 EU / 12.0 US | Hair: Grey-Black | Eyes:

Height: 178 cm / 5'10" | Waist: 97 cm / 38" | Inseam: 79 cm / 31" | Collar: 43 cm / 17" |

Suit size: 58.0 cm / 48" | Suit Length: R | Shoe: 46.5 EU / 12.0 US | Hair: Grey-Black | Eyes:
Brown