

NEAL  
HAMIL  
AGENCY



Tara Suttitum

Height: 170 cm / 5'7" | Bust: 76 cm / 30" | Waist: 61 cm / 24" | Hips: 89 cm / 35" | Dress: 32 / 2 | Inseam: 71 cm / 28" | Shoe: 40.0 EU / 9.0 US | Hair: Black | Eyes: Brown

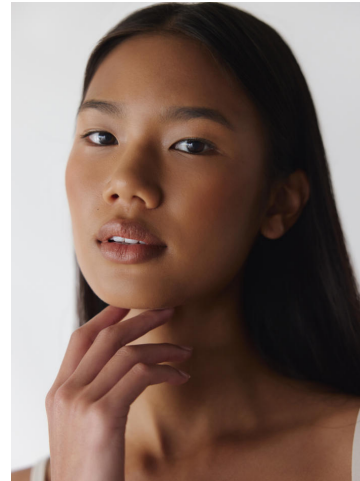
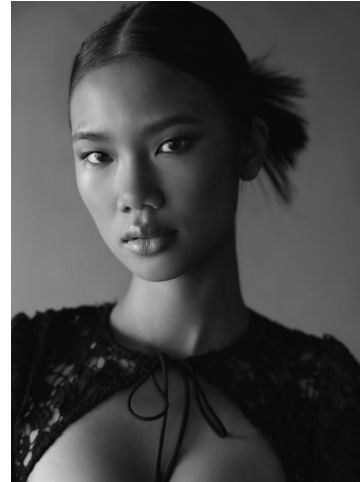
# NEAL HAMIL AGENCY



Tara Suttitum

Height: 170 cm / 5'7" | Bust: 76 cm / 30" | Waist: 61 cm / 24" | Hips: 89 cm / 35" | Dress: 32 / 2 | Inseam: 71 cm / 28" | Shoe: 40.0 EU / 9.0 US | Hair: Black | Eyes: Brown

# NEAL HAMIL AGENCY



Tara Suttitum

Height: 170 cm / 5'7" | Bust: 76 cm / 30" | Waist: 61 cm / 24" | Hips: 89 cm / 35" | Dress: 32 / 2 | Inseam: 71 cm / 28" | Shoe: 40.0 EU / 9.0 US | Hair: Black | Eyes: Brown