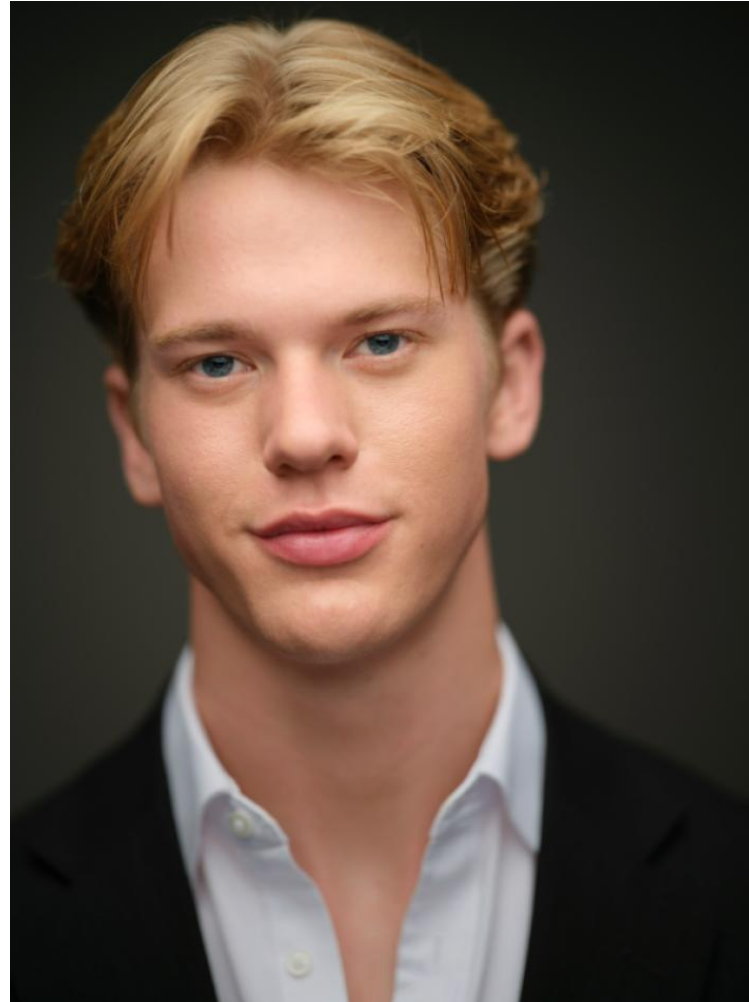


NEAL
HAMIL
AGENCY



Logan Witt

Height: 191 cm / 6'3" | Waist: 81 cm / 32" | Inseam: 86 cm / 34" | Collar: 43 cm / 17" | Suit size: 48.0 cm / 38" | Suit Length: L | Shoe: 44.5 EU / 10.5 US | Hair: Blonde | Eyes: Blue

NEAL HAMIL AGENCY



Logan Witt

Height: 191 cm / 6'3" | Waist: 81 cm / 32" | Inseam: 86 cm / 34" | Collar: 43 cm / 17" | Suit size: 48.0 cm / 38" | Suit Length: L | Shoe: 44.5 EU / 10.5 US | Hair: Blonde | Eyes: Blue

NEAL HAMIL AGENCY



Logan Witt

Height: 191 cm / 6'3" | Waist: 81 cm / 32" | Inseam: 86 cm / 34" | Collar: 43 cm / 17" | Suit size: 48.0 cm / 38" | Suit Length: L | Shoe: 44.5 EU / 10.5 US | Hair: Blonde | Eyes: Blue

NEAL HAMIL AGENCY



Logan Witt

Height: 191 cm / 6'3" | Waist: 81 cm / 32" | Inseam: 86 cm / 34" | Collar: 43 cm / 17" | Suit size: 48.0 cm / 38" | Suit Length: L | Shoe: 44.5 EU / 10.5 US | Hair: Blonde | Eyes: Blue

NEAL HAMIL AGENCY



Logan Witt

Height: 191 cm / 6'3" | Waist: 81 cm / 32" | Inseam: 86 cm / 34" | Collar: 43 cm / 17" | Suit size: 48.0 cm / 38" | Suit Length: L | Shoe: 44.5 EU / 10.5 US | Hair: Blonde | Eyes: Blue

NEAL HAMIL AGENCY



Logan Witt

Height: 191 cm / 6'3" | Waist: 81 cm / 32" | Inseam: 86 cm / 34" | Collar: 43 cm / 17" | Suit size: 48.0 cm / 38" | Suit Length: L | Shoe: 44.5 EU / 10.5 US | Hair: Blonde | Eyes: Blue

NEAL HAMIL AGENCY



Logan Witt

Height: 191 cm / 6'3" | Waist: 81 cm / 32" | Inseam: 86 cm / 34" | Collar: 43 cm / 17" | Suit size: 48.0 cm / 38" | Suit Length: L | Shoe: 44.5 EU / 10.5 US | Hair: Blonde | Eyes: Blue

NEAL HAMIL AGENCY



Logan Witt

Height: 191 cm / 6'3" | Waist: 81 cm / 32" | Inseam: 86 cm / 34" | Collar: 43 cm / 17" | Suit size: 48.0 cm / 38" | Suit Length: L | Shoe: 44.5 EU / 10.5 US | Hair: Blonde | Eyes: Blue

NEAL HAMIL AGENCY



Logan Witt

Height: 191 cm / 6'3" | Waist: 81 cm / 32" | Inseam: 86 cm / 34" | Collar: 43 cm / 17" | Suit size: 48.0 cm / 38" | Suit Length: L | Shoe: 44.5 EU / 10.5 US | Hair: Blonde | Eyes: Blue

NEAL
HAMIL
AGENCY



Logan Witt

Height: 191 cm / 6'3" | Waist: 81 cm / 32" | Inseam: 86 cm / 34" | Collar: 43 cm / 17" | Suit size: 48.0 cm / 38" | Suit Length: L | Shoe: 44.5 EU / 10.5 US | Hair: Blonde | Eyes: Blue

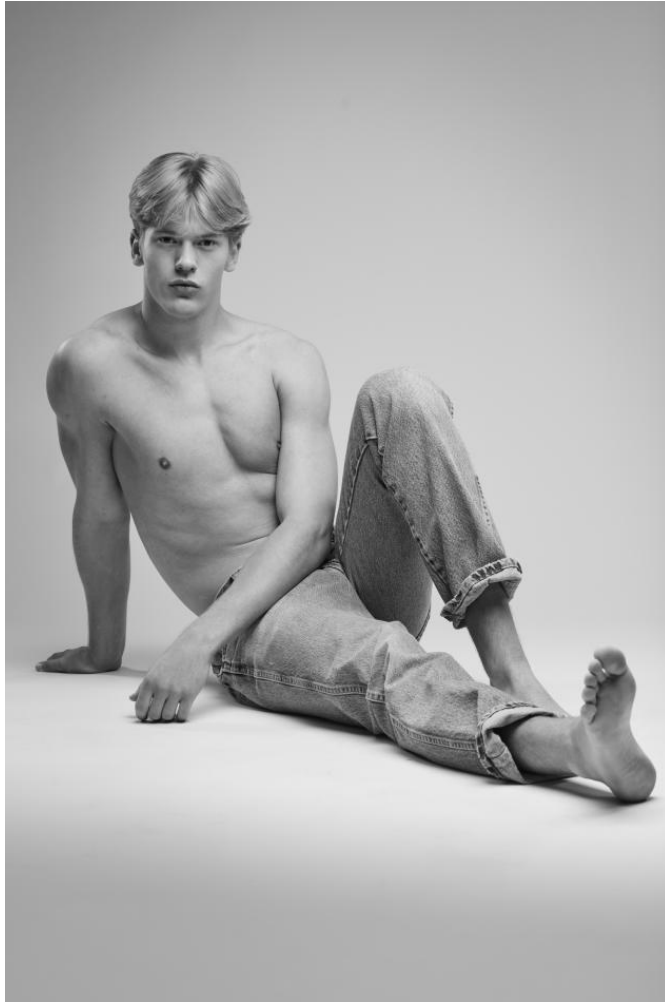
NEAL HAMIL AGENCY



Logan Witt

Height: 191 cm / 6'3" | Waist: 81 cm / 32" | Inseam: 86 cm / 34" | Collar: 43 cm / 17" | Suit size: 48.0 cm / 38" | Suit Length: L | Shoe: 44.5 EU / 10.5 US | Hair: Blonde | Eyes: Blue

NEAL
HAMIL
AGENCY



Logan Witt

Height: 191 cm / 6'3" | Waist: 81 cm / 32" | Inseam: 86 cm / 34" | Collar: 43 cm / 17" | Suit size: 48.0 cm / 38" | Suit Length: L | Shoe: 44.5 EU / 10.5 US | Hair: Blonde | Eyes: Blue