

NEAL  
HAMIL  
AGENCY



Ke'era Battin

Height: 170 cm / 5'7" | Bust: 81 cm / 32" | Waist: 64 cm / 25" | Hips: 90 cm / 35.5" | Dress: 32 / 2 | Shoe: 39.0 EU / 8.0 US | Hair: Brown | Eyes: Hazel

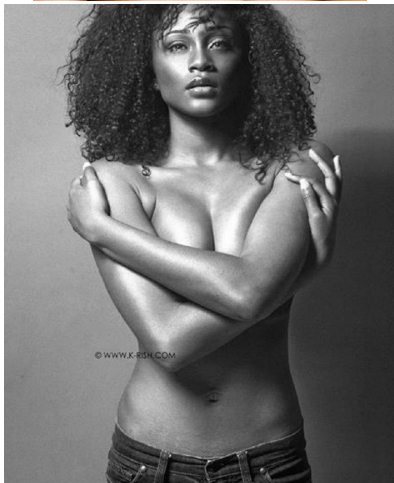
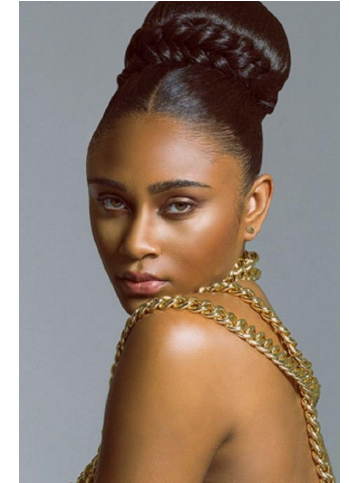
# NEAL HAMIL AGENCY



Ke'era Battin

Height: 170 cm / 5'7" | Bust: 81 cm / 32" | Waist: 64 cm / 25" | Hips: 90 cm / 35.5" | Dress: 32 / 2 | Shoe: 39.0 EU / 8.0 US | Hair: Brown | Eyes: Hazel

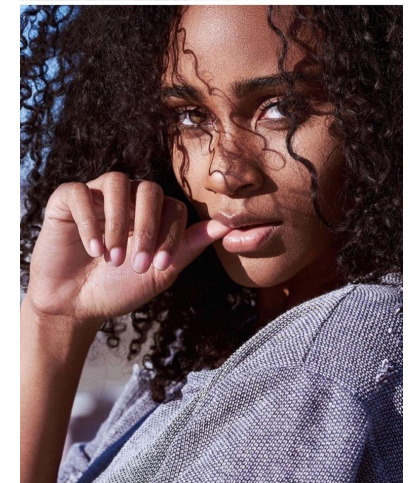
# NEAL HAMIL AGENCY



Ke'era Battin

Height: 170 cm / 5'7" | Bust: 81 cm / 32" | Waist: 64 cm / 25" | Hips: 90 cm / 35.5" | Dress: 32 / 2 | Shoe: 39.0 EU / 8.0 US | Hair: Brown | Eyes: Hazel

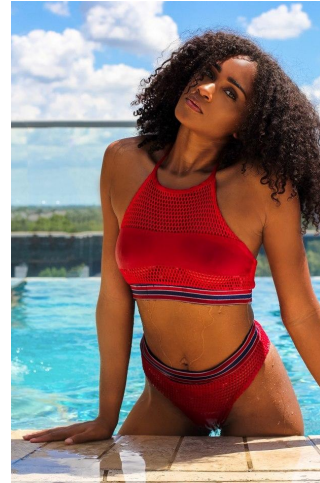
# NEAL HAMIL AGENCY



Ke'era Battin

Height: 170 cm / 5'7" | Bust: 81 cm / 32" | Waist: 64 cm / 25" | Hips: 90 cm / 35.5" | Dress: 32 / 2 | Shoe: 39.0 EU / 8.0 US | Hair: Brown | Eyes: Hazel

# NEAL HAMIL AGENCY



Ke'era Battin

Height: 170 cm / 5'7" | Bust: 81 cm / 32" | Waist: 64 cm / 25" | Hips: 90 cm / 35.5" | Dress: 32 / 2 | Shoe: 39.0 EU / 8.0 US | Hair: Brown | Eyes: Hazel