



Jay Battin

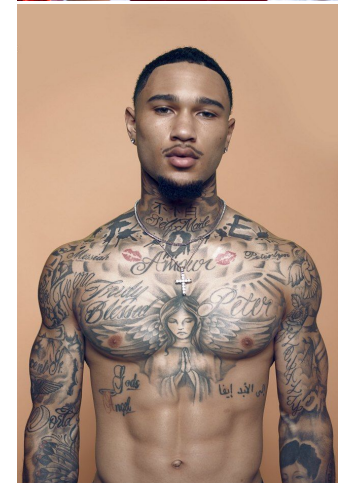
Height: 180 cm / 5'11" | Waist: 78 cm / 30.5" | Suit Length: R | Shoe: 42.0 EU / 8.5 US | Hair: Black | Eyes: Hazel



Jay Battin

Height: 180 cm / 5'11" | Waist: 78 cm / 30.5" | Suit Length: R | Shoe: 42.0 EU / 8.5 US | Hair: Black | Eyes: Hazel

NEAL
HAMIL
AGENCY
— A Slick family company since 1993 —



Jay Battin

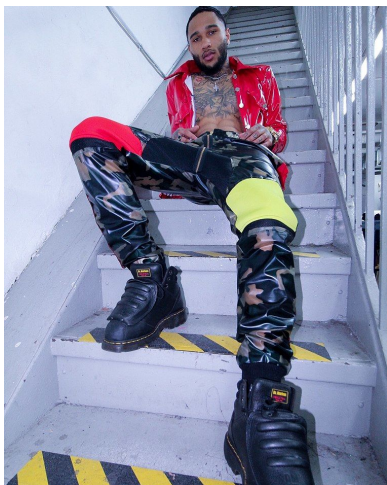
Height: 180 cm / 5'11" | Waist: 78 cm / 30.5" | Suit Length: R | Shoe: 42.0 EU / 8.5 US | Hair: Black | Eyes: Hazel



Jay Battin

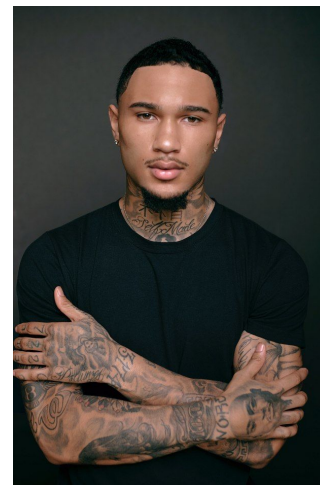
Height: 180 cm / 5'11" | Waist: 78 cm / 30.5" | Suit Length: R | Shoe: 42.0 EU / 8.5 US | Hair: Black | Eyes: Hazel

NEAL
HAMIL
AGENCY
— A Stell family company since 1993 —



Jay Battin

Height: 180 cm / 5'11" | Waist: 78 cm / 30.5" | Suit Length: R | Shoe: 42.0 EU / 8.5 US | Hair: Black | Eyes: Hazel



Jay Battin

Height: 180 cm / 5'11" | Waist: 78 cm / 30.5" | Suit Length: R | Shoe: 42.0 EU / 8.5 US | Hair: Black | Eyes: Hazel