

NEAL HAMIL AGENCY



Harry Crutcher

Height: 188 cm / 6'2" | Waist: 81 cm / 32" | Inseam: 80 cm / 31.5" | Suit size: 46.0 cm / 36" | Suit Length: L | Shoe: 46.0 EU / 11.5 US | Hair: Brown | Eyes: Blue

NEAL HAMIL AGENCY



Harry Crutcher

Height: 188 cm / 6'2" | Waist: 81 cm / 32" | Inseam: 80 cm / 31.5" | Suit size: 46.0 cm / 36" | Suit Length: L | Shoe: 46.0 EU / 11.5 US | Hair: Brown | Eyes: Blue

NEAL HAMIL AGENCY



Harry Crutcher

Height: 188 cm / 6'2" | Waist: 81 cm / 32" | Inseam: 80 cm / 31.5" | Suit size: 46.0 cm / 36" | Suit Length: L | Shoe: 46.0 EU / 11.5 US | Hair: Brown | Eyes: Blue

NEAL HAMIL AGENCY



Harry Crutcher

Height: 188 cm / 6'2" | Waist: 81 cm / 32" | Inseam: 80 cm / 31.5" | Suit size: 46.0 cm / 36" | Suit Length: L | Shoe: 46.0 EU / 11.5 US | Hair: Brown | Eyes: Blue

NEAL HAMIL AGENCY



Harry Crutcher

Height: 188 cm / 6'2" | Waist: 81 cm / 32" | Inseam: 80 cm / 31.5" | Suit size: 46.0 cm / 36" | Suit Length: L | Shoe: 46.0 EU / 11.5 US | Hair: Brown | Eyes: Blue

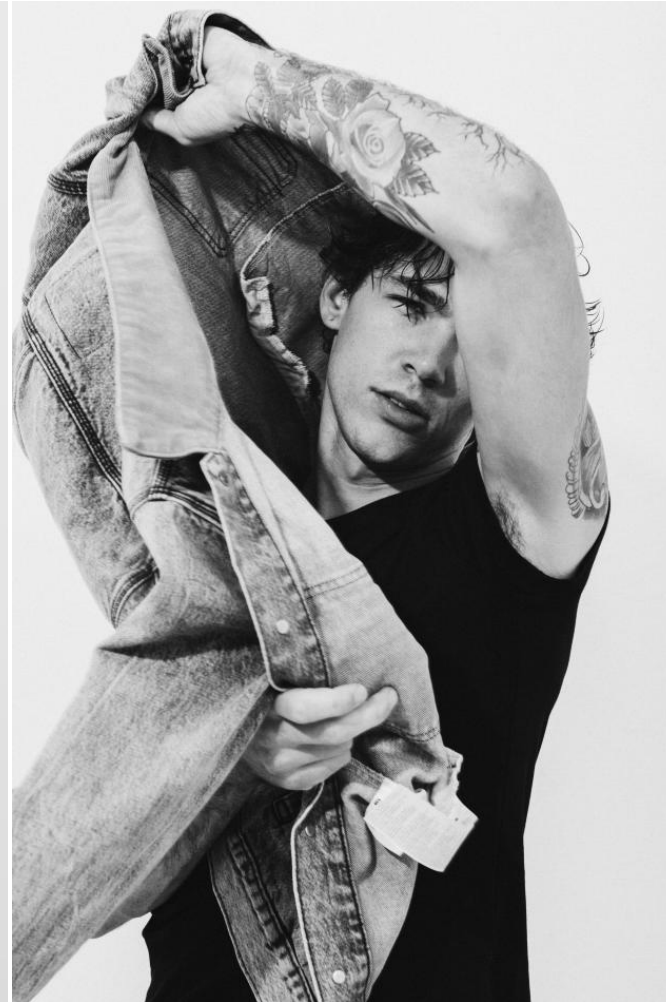
NEAL HAMIL AGENCY



Harry Crutcher

Height: 188 cm / 6'2" | Waist: 81 cm / 32" | Inseam: 80 cm / 31.5" | Suit size: 46.0 cm / 36" | Suit Length: L | Shoe: 46.0 EU / 11.5 US | Hair: Brown | Eyes: Blue

NEAL HAMIL AGENCY



Harry Crutcher

Height: 188 cm / 6'2" | Waist: 81 cm / 32" | Inseam: 80 cm / 31.5" | Suit size: 46.0 cm / 36" | Suit Length: L | Shoe: 46.0 EU / 11.5 US | Hair: Brown | Eyes: Blue

NEAL HAMIL AGENCY



Harry Crutcher

Height: 188 cm / 6'2" | Waist: 81 cm / 32" | Inseam: 80 cm / 31.5" | Suit size: 46.0 cm / 36" | Suit Length: L | Shoe: 46.0 EU / 11.5 US | Hair: Brown | Eyes: Blue

NEAL HAMIL AGENCY



Harry Crutcher

Height: 188 cm / 6'2" | Waist: 81 cm / 32" | Inseam: 80 cm / 31.5" | Suit size: 46.0 cm / 36" | Suit Length: L | Shoe: 46.0 EU / 11.5 US | Hair: Brown | Eyes: Blue

NEAL HAMIL AGENCY



Harry Crutcher

Height: 188 cm / 6'2" | Waist: 81 cm / 32" | Inseam: 80 cm / 31.5" | Suit size: 46.0 cm / 36" | Suit Length: L | Shoe: 46.0 EU / 11.5 US | Hair: Brown | Eyes: Blue

NEAL HAMIL AGENCY



Harry Crutcher

Height: 188 cm / 6'2" | Waist: 81 cm / 32" | Inseam: 80 cm / 31.5" | Suit size: 46.0 cm / 36" | Suit Length: L | Shoe: 46.0 EU / 11.5 US | Hair: Brown | Eyes: Blue