



David Bates

Height: 184 cm / 6'0.5" | Waist: 78 cm / 30.5" | Inseam: 84 cm / 33" | Suit size: 50.0 cm / 40" | Suit Length: R | Shoe: 45.0 EU / 11.0 US | Hair: Black | Eyes: Brown

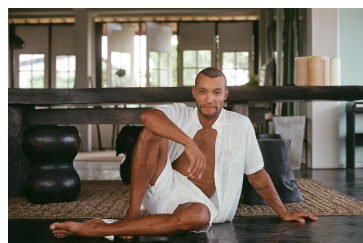
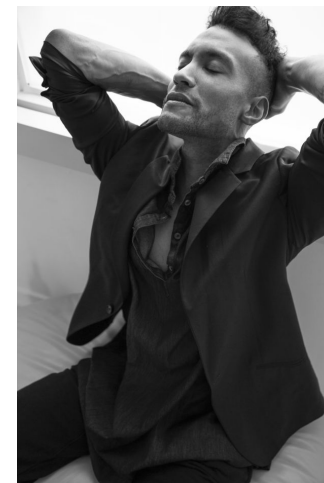
NEAL
HAMIL
AGENCY
— A Slick family company since 1993 —



David Bates

Height: 184 cm / 6'0.5" | Waist: 78 cm / 30.5" | Inseam: 84 cm / 33" | Suit size: 50.0 cm / 40" | Suit Length: R | Shoe: 45.0 EU / 11.0 US | Hair: Black | Eyes: Brown

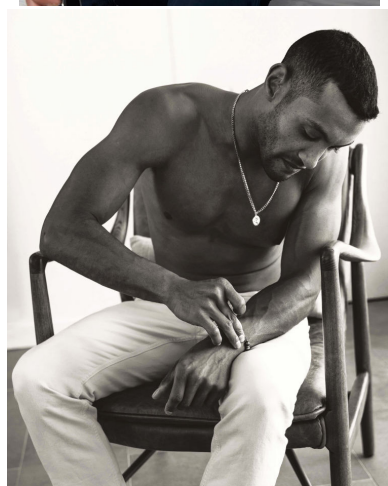
NEAL
HAMIL
AGENCY
— A Sells family company since 1993 —



David Bates

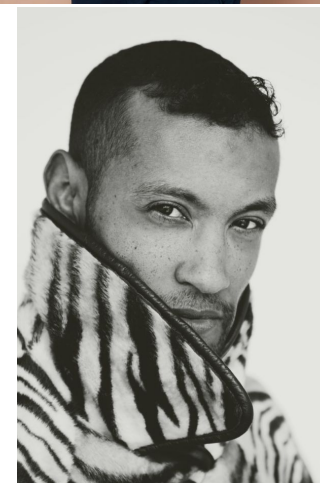
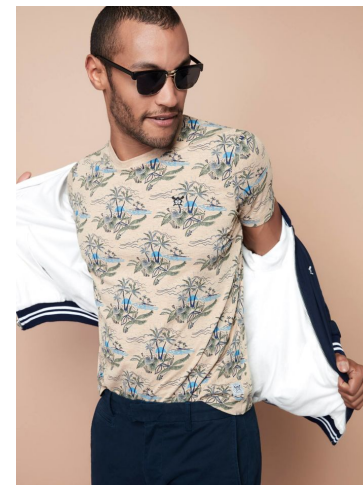
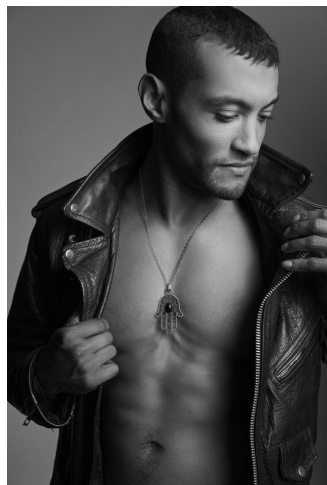
Height: 184 cm / 6'0.5" | Waist: 78 cm / 30.5" | Inseam: 84 cm / 33" | Suit size: 50.0 cm / 40" | Suit Length: R | Shoe: 45.0 EU / 11.0 US | Hair: Black | Eyes: Brown

NEAL
HAMIL
AGENCY
— A Slick family company since 1993 —



David Bates

Height: 184 cm / 6'0.5" | Waist: 78 cm / 30.5" | Inseam: 84 cm / 33" | Suit size: 50.0 cm / 40" | Suit Length: R | Shoe: 45.0 EU / 11.0 US | Hair: Black | Eyes: Brown

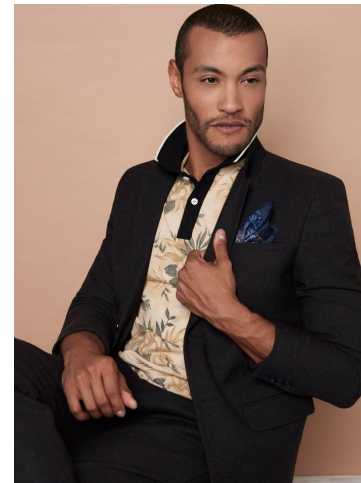


David Bates

Height: 184 cm / 6'0.5" | Waist: 78 cm / 30.5" | Inseam: 84 cm / 33" | Suit size: 50.0 cm / 40" | Suit Length: R | Shoe: 45.0 EU / 11.0 US | Hair: Black | Eyes: Brown

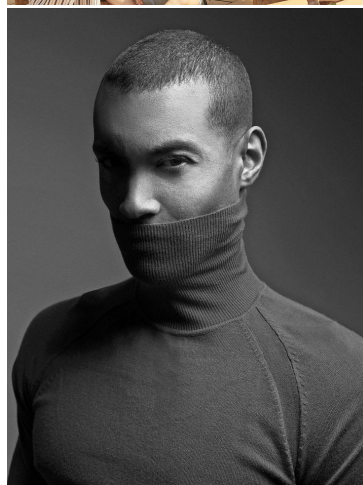
NEAL HAMIL AGENCY

— A Sief family company since 1993 —



David Bates

Height: 184 cm / 6'0.5" | Waist: 78 cm / 30.5" | Inseam: 84 cm / 33" | Suit size: 50.0 cm / 40" | Suit Length: R | Shoe: 45.0 EU / 11.0 US | Hair: Black | Eyes: Brown



David Bates

Height: 184 cm / 6'0.5" | Waist: 78 cm / 30.5" | Inseam: 84 cm / 33" | Suit size: 50.0 cm / 40" | Suit Length: R | Shoe: 45.0 EU / 11.0 US | Hair: Black | Eyes: Brown



David Bates

Height: 184 cm / 6'0.5" | Waist: 78 cm / 30.5" | Inseam: 84 cm / 33" | Suit size: 50.0 cm / 40" | Suit Length: R | Shoe: 45.0 EU / 11.0 US | Hair: Black | Eyes: Brown