

NEAL
HAMIL
AGENCY



David Bates

Height: 184 cm / 6'0.5" | Waist: 79 cm / 31" | Inseam: 84 cm / 33" | Collar: 39 cm / 15.5" | Suit size: 48.0 cm / 38" | Suit Length: L | Shoe: 46.0 EU / 11.5 US | Hair: Black | Eyes: Brown

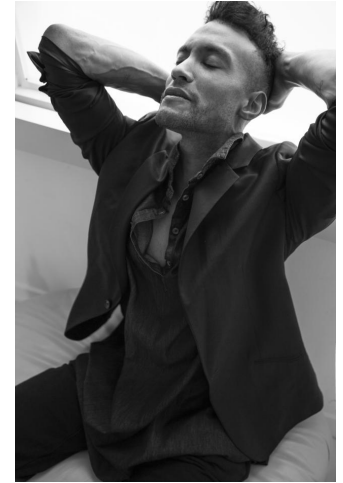
NEAL HAMIL AGENCY



David Bates

Height: 184 cm / 6'0.5" | Waist: 79 cm / 31" | Inseam: 84 cm / 33" | Collar: 39 cm / 15.5" | Suit size: 48.0 cm / 38" | Suit Length: L | Shoe: 46.0 EU / 11.5 US | Hair: Black | Eyes: Brown

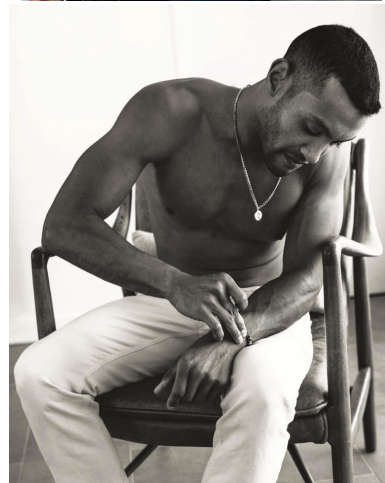
NEAL HAMIL AGENCY



David Bates

Height: 184 cm / 6'0.5" | Waist: 79 cm / 31" | Inseam: 84 cm / 33" | Collar: 39 cm / 15.5" | Suit size: 48.0 cm / 38" | Suit Length: L | Shoe: 46.0 EU / 11.5 US | Hair: Black | Eyes: Brown

NEAL HAMIL AGENCY



David Bates

Height: 184 cm / 6'0.5" | Waist: 79 cm / 31" | Inseam: 84 cm / 33" | Collar: 39 cm / 15.5" | Suit size: 48.0 cm / 38" | Suit Length: L | Shoe: 46.0 EU / 11.5 US | Hair: Black | Eyes: Brown

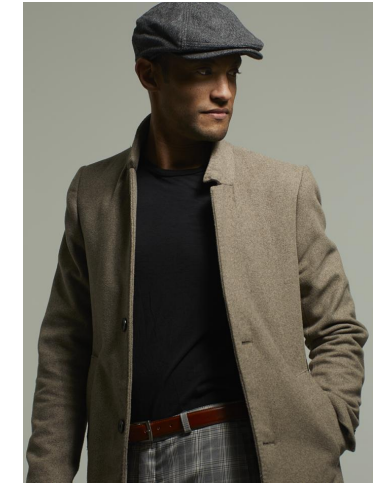
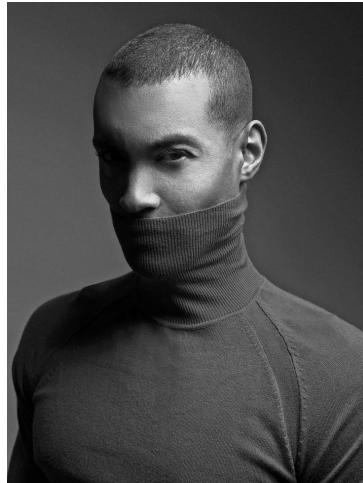
NEAL HAMIL AGENCY



David Bates

Height: 184 cm / 6'0.5" | Waist: 79 cm / 31" | Inseam: 84 cm / 33" | Collar: 39 cm / 15.5" | Suit size: 48.0 cm / 38" | Suit Length: L | Shoe: 46.0 EU / 11.5 US | Hair: Black | Eyes: Brown

NEAL HAMIL AGENCY



David Bates

Height: 184 cm / 6'0.5" | Waist: 79 cm / 31" | Inseam: 84 cm / 33" | Collar: 39 cm / 15.5" | Suit size: 48.0 cm / 38" | Suit Length: L | Shoe: 46.0 EU / 11.5 US | Hair: Black | Eyes: Brown

NEAL
HAMIL
AGENCY

David Bates

Height: 184 cm / 6'0.5" | Waist: 79 cm / 31" | Inseam: 84 cm / 33" | Collar: 39 cm / 15.5" | Suit size: 48.0 cm / 38" | Suit Length: L | Shoe: 46.0 EU / 11.5 US | Hair: Black | Eyes:
Brown