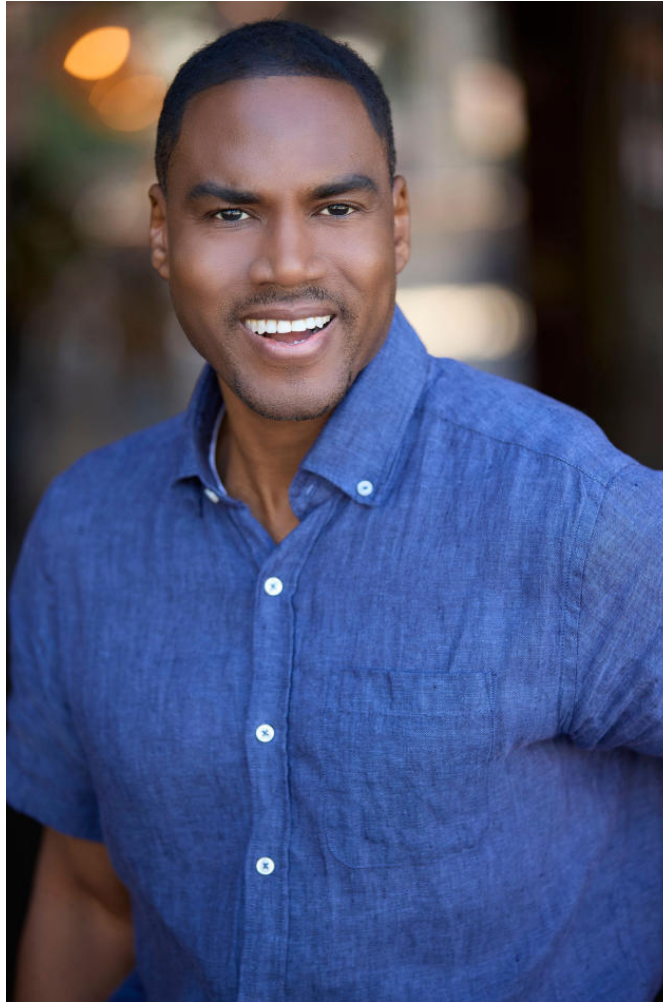


NEAL
HAMIL
AGENCY



Chris Richardson

Height: 183 cm / 6'0" | Waist: 81 cm / 32" | Inseam: 86 cm / 34" | Collar: 41 cm / 16" | Suit size: 50.0 cm / 40" | Suit Length: R | Shoe: 43.5 EU / 10.0 US | Hair: Black | Eyes: Brown

NEAL HAMIL AGENCY



Chris Richardson

Height: 183 cm / 6'0" | Waist: 81 cm / 32" | Inseam: 86 cm / 34" | Collar: 41 cm / 16" | Suit size: 50.0 cm / 40" | Suit Length: R | Shoe: 43.5 EU / 10.0 US | Hair: Black | Eyes: Brown

NEAL HAMIL AGENCY



Chris Richardson

Height: 183 cm / 6'0" | Waist: 81 cm / 32" | Inseam: 86 cm / 34" | Collar: 41 cm / 16" | Suit size: 50.0 cm / 40" | Suit Length: R | Shoe: 43.5 EU / 10.0 US | Hair: Black | Eyes: Brown

NEAL
HAMIL
AGENCY



Chris Richardson

Height: 183 cm / 6'0" | Waist: 81 cm / 32" | Inseam: 86 cm / 34" | Collar: 41 cm / 16" | Suit size: 50.0 cm / 40" | Suit Length: R | Shoe: 43.5 EU / 10.0 US | Hair: Black | Eyes: Brown

NEAL HAMIL AGENCY



Chris Richardson

Height: 183 cm / 6'0" | Waist: 81 cm / 32" | Inseam: 86 cm / 34" | Collar: 41 cm / 16" | Suit size: 50.0 cm / 40" | Suit Length: R | Shoe: 43.5 EU / 10.0 US | Hair: Black | Eyes: Brown

NEAL HAMIL AGENCY



Chris Richardson

Height: 183 cm / 6'0" | Waist: 81 cm / 32" | Inseam: 86 cm / 34" | Collar: 41 cm / 16" | Suit size: 50.0 cm / 40" | Suit Length: R | Shoe: 43.5 EU / 10.0 US | Hair: Black | Eyes: Brown

NEAL HAMIL AGENCY



Chris Richardson

Height: 183 cm / 6'0" | Waist: 81 cm / 32" | Inseam: 86 cm / 34" | Collar: 41 cm / 16" | Suit size: 50.0 cm / 40" | Suit Length: R | Shoe: 43.5 EU / 10.0 US | Hair: Black | Eyes: Brown

NEAL HAMIL AGENCY



Chris Richardson

Height: 183 cm / 6'0" | Waist: 81 cm / 32" | Inseam: 86 cm / 34" | Collar: 41 cm / 16" | Suit size: 50.0 cm / 40" | Suit Length: R | Shoe: 43.5 EU / 10.0 US | Hair: Black | Eyes: Brown

NEAL HAMIL AGENCY



Chris Richardson

Height: 183 cm / 6'0" | Waist: 81 cm / 32" | Inseam: 86 cm / 34" | Collar: 41 cm / 16" | Suit size: 50.0 cm / 40" | Suit Length: R | Shoe: 43.5 EU / 10.0 US | Hair: Black | Eyes: Brown

NEAL HAMIL AGENCY

25% OFF
Already Low MCX Prices

ENTIRE SELECTION
UNDER ARMOUR
MARINE PRIDE APPAREL

- Assorted Colors & Styles in Under Armour Performance Fabric
- Men's Sizes S-2XL

Shown with:
 3" Full Block "STARS" — Straight — Placement 2
 8" Full Block Number Placement 5
 10" Full Block Number Placement 30
 Custom Sleeve Stripes Placement 17L/R
 Added Options: DP19T & BRDCT — "Y" Scarlet

New TFW5 Option DP19T
 New TFW5 Option BRDCT
 *Not NFHS legal if white color on body

FJ9055FI/YFJ9055FI

- Premium stock game jersey with side
- White cloth is 100% Polyester for color
- Body: 100% Nylon tricot mesh (55 Clo)
- Collar: 2-Ply 100% Nylon warp knit (90 Clo)
- Sleeve: 100% Nylon warp knit (90 Clo)
- Sleeve End: 1" gathered elastic cuff
- Neck: 1" rib knit lapover V-Neck
- Side Insert: 92% Nylon/8% Lycra® (09)

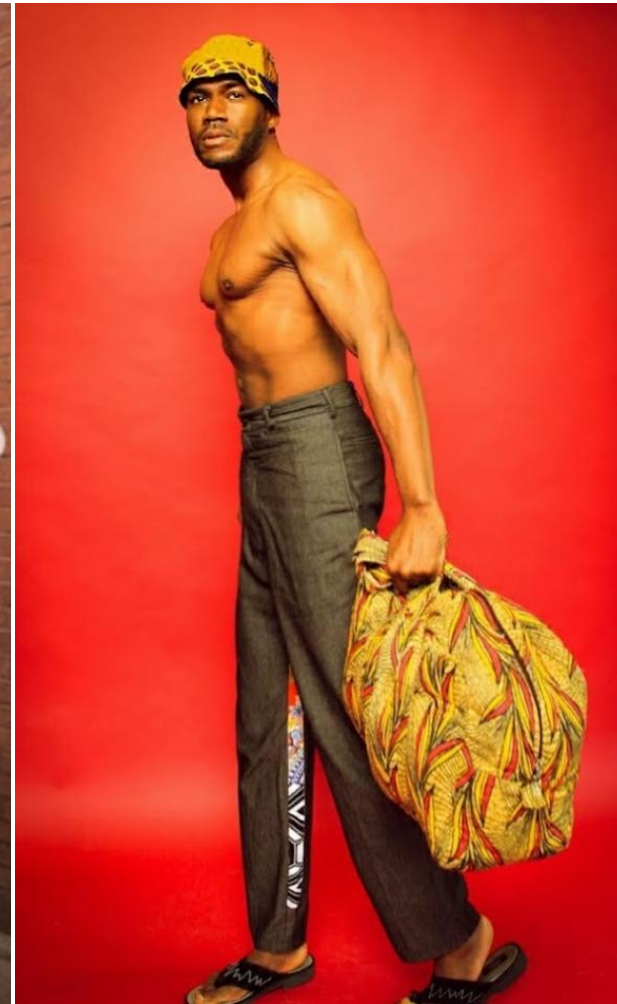
Adult Sizes: S-3XL (No oversize charge)
 Youth Sizes: S-XL
 FJ9055FI - Adult
 YFJ9055FI - Youth

F4590 - Dazzle Game
 See Page 111

Chris Richardson

Height: 183 cm / 6'0" | Waist: 81 cm / 32" | Inseam: 86 cm / 34" | Collar: 41 cm / 16" | Suit size: 50.0 cm / 40" | Suit Length: R | Shoe: 43.5 EU / 10.0 US | Hair: Black | Eyes: Brown

NEAL HAMIL AGENCY



Chris Richardson

Height: 183 cm / 6'0" | Waist: 81 cm / 32" | Inseam: 86 cm / 34" | Collar: 41 cm / 16" | Suit size: 50.0 cm / 40" | Suit Length: R | Shoe: 43.5 EU / 10.0 US | Hair: Black | Eyes: Brown

NEAL HAMIL AGENCY



Chris Richardson

Height: 183 cm / 6'0" | Waist: 81 cm / 32" | Inseam: 86 cm / 34" | Collar: 41 cm / 16" | Suit size: 50.0 cm / 40" | Suit Length: R | Shoe: 43.5 EU / 10.0 US | Hair: Black | Eyes: Brown