

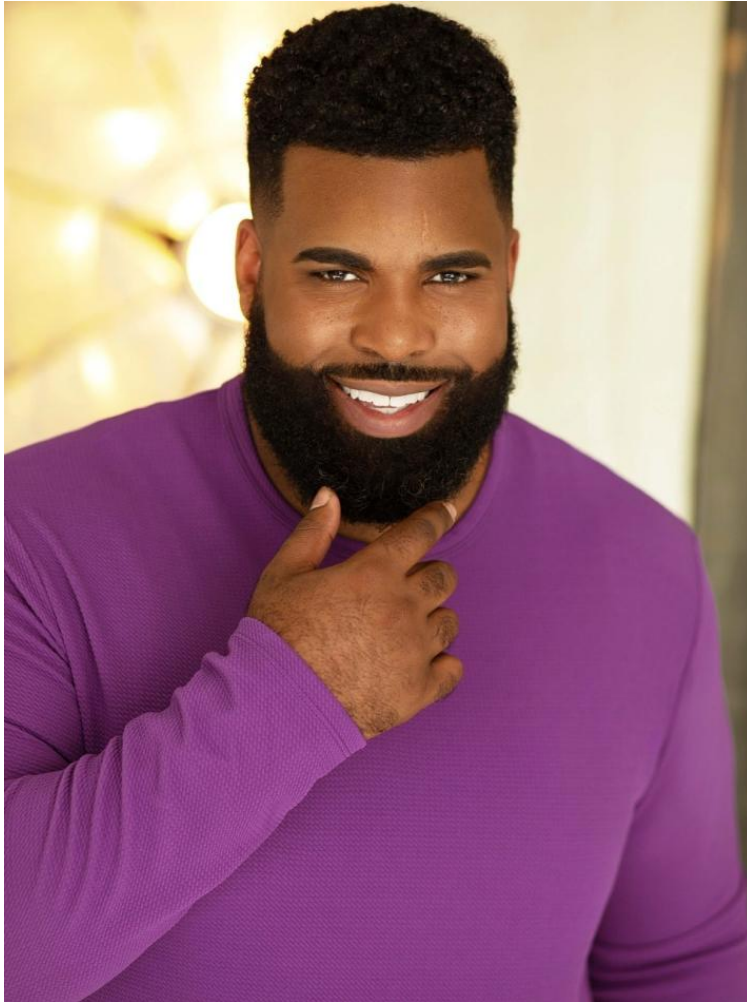
NEAL HAMIL AGENCY



Brandon Madden

Height: 188 cm / 6'2" | Waist: 112 cm / 44" | Inseam: 81 cm / 32" | Collar: 47 cm / 18.5" | Shoe: 49.0 EU / 14.0 US | Hair: Black | Eyes: Brown

NEAL HAMIL AGENCY



Brandon Madden

Height: 188 cm / 6'2" | Waist: 112 cm / 44" | Inseam: 81 cm / 32" | Collar: 47 cm / 18.5" | Shoe: 49.0 EU / 14.0 US | Hair: Black | Eyes: Brown

NEAL HAMIL AGENCY



Brandon Madden

Height: 188 cm / 6'2" | Waist: 112 cm / 44" | Inseam: 81 cm / 32" | Collar: 47 cm / 18.5" | Shoe: 49.0 EU / 14.0 US | Hair: Black | Eyes: Brown

NEAL HAMIL AGENCY



Brandon Madden

Height: 188 cm / 6'2" | Waist: 112 cm / 44" | Inseam: 81 cm / 32" | Collar: 47 cm / 18.5" | Shoe: 49.0 EU / 14.0 US | Hair: Black | Eyes: Brown

NEAL HAMIL AGENCY



Men's big & tall
Van Heusen
long-sleeve traveler
woven dress shirts ▶
reg. \$70

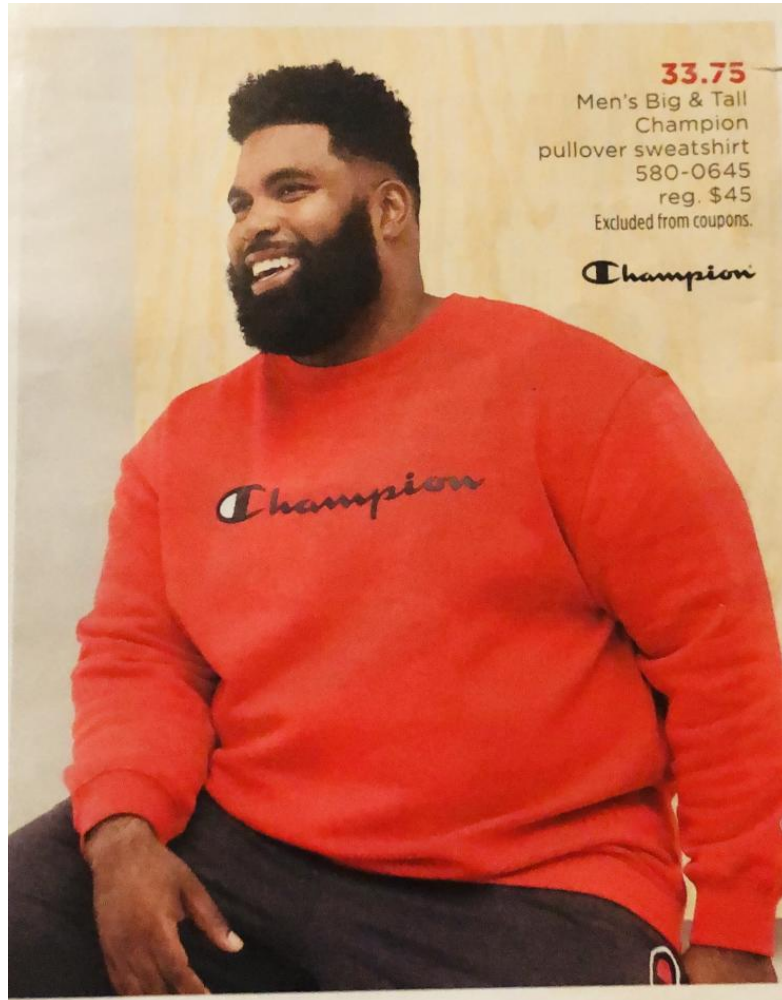
VAN HEUSEN



Brandon Madden

Height: 188 cm / 6'2" | Waist: 112 cm / 44" | Inseam: 81 cm / 32" | Collar: 47 cm / 18.5" | Shoe: 49.0 EU / 14.0 US | Hair: Black | Eyes: Brown

NEAL HAMIL AGENCY



Brandon Madden

Height: 188 cm / 6'2" | Waist: 112 cm / 44" | Inseam: 81 cm / 32" | Collar: 47 cm / 18.5" | Shoe: 49.0 EU / 14.0 US | Hair: Black | Eyes: Brown